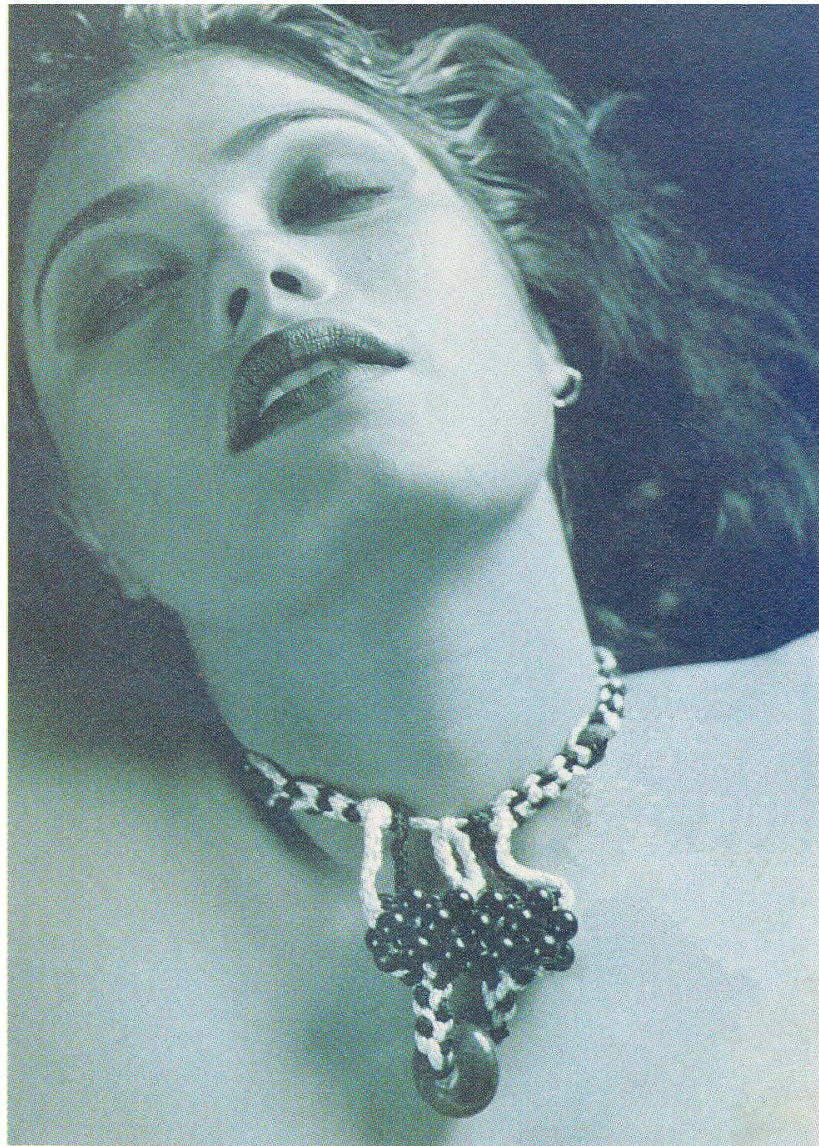




RUCHIRA PADIA











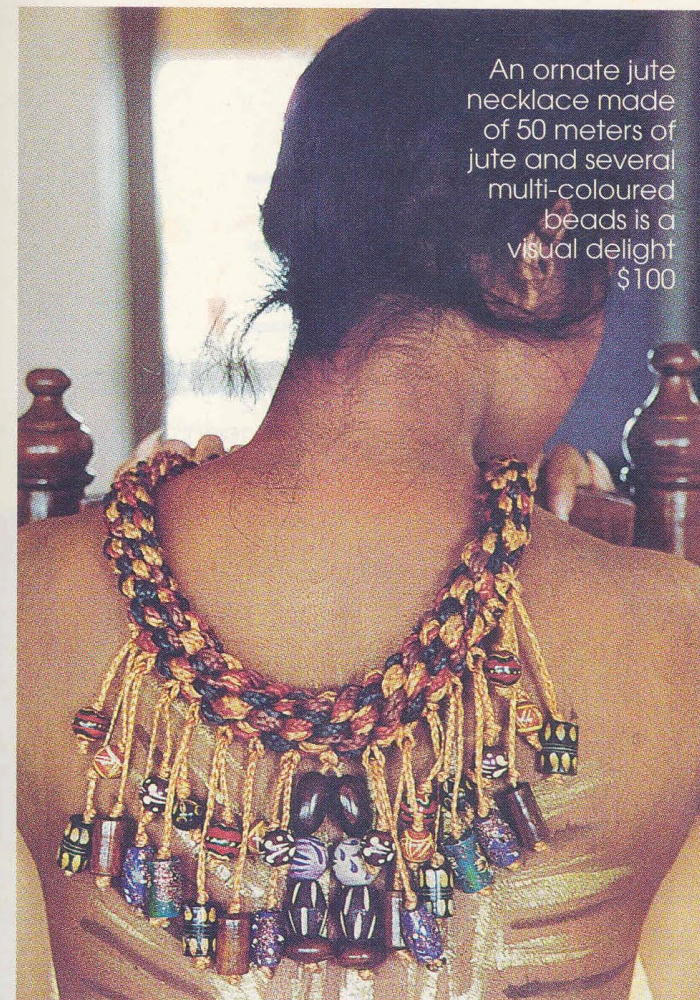
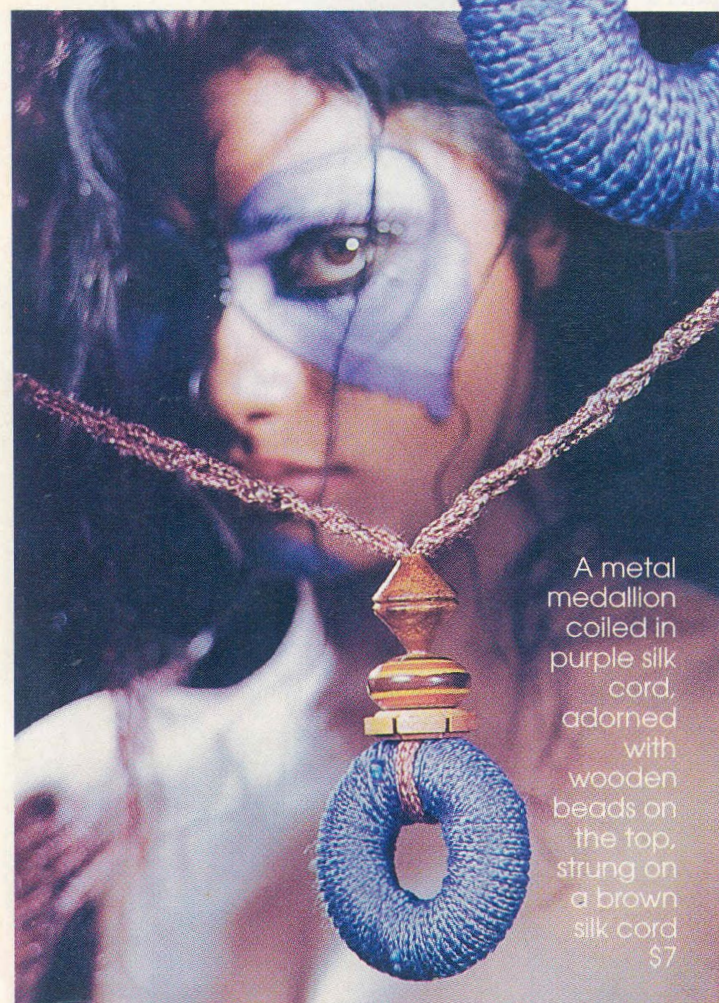


Add a little tribal beat to your attire ...it could work like magic

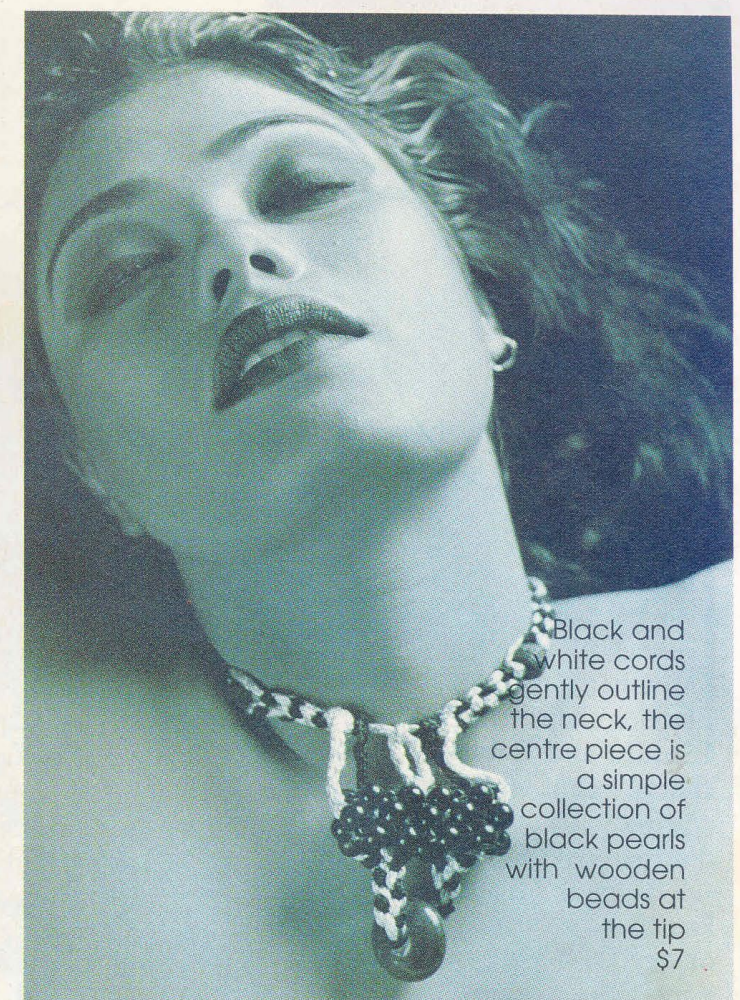
TRIBAL WARE

JEWELLERY is an art form designed to be worn. The modern artist constantly marvels at the skill and sensitivity manifested in tribal works of art. The tribal man's outlook is magical. Tribal jewellery is often symbolic of the religious life of the people. Magical powers are ascribed to many objects. Animal claws, shells and other organic materials are worn. Certain forms of wood or stone became amulets, able to ward off evil spirits, disease, death, or the malign spells of an enemy. Here we bring you some contemporary jewellery designed by RUCHIRA PADIA, replete with the vitality and powerful aesthetic qualities of genuine tribal jewellery.

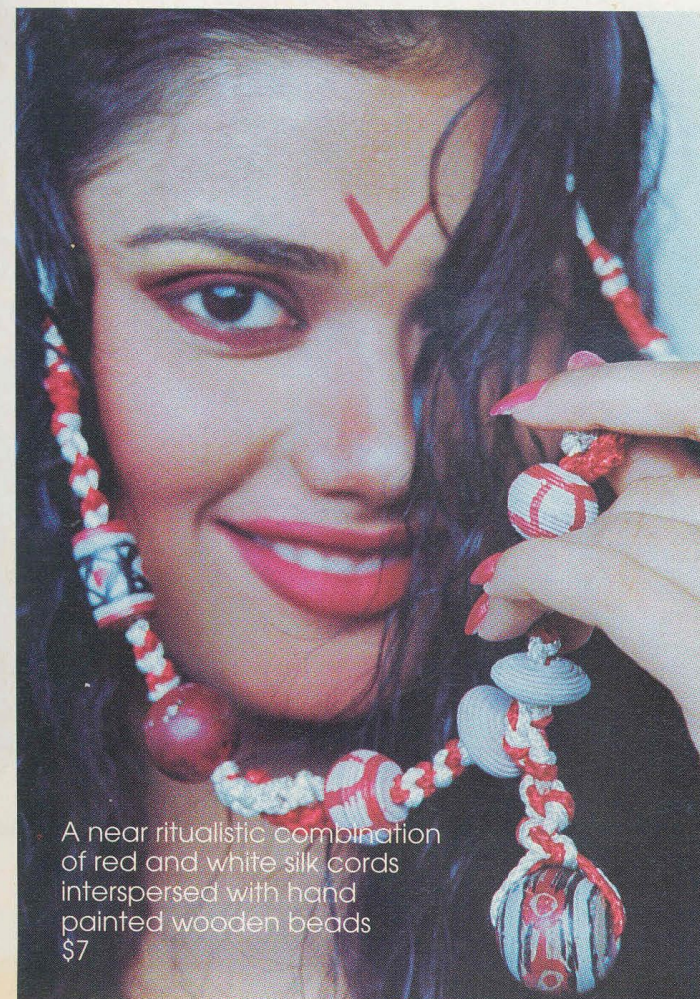
A metal medallion coiled in purple silk cord, adorned with wooden beads on the top, strung on a brown silk cord \$7



An ornate jute necklace made of 50 meters of jute and several multi-coloured beads is a visual delight \$100



Black and white cords gently outline the neck, the centre piece is a simple collection of black pearls with wooden beads at the tip \$7



A near ritualistic combination of red and white silk cords interspersed with hand painted wooden beads \$7



Hip girdle woven out of white, black and natural undyed silk cords, spotted with wooden beads and a metal buckle \$9.99